

PLEASE DO NOT PLACE TRADES BEFORE READING THIS MANUAL



SS7 TRADER®
The Binary Expert



NEXUS 6.1 BY SS7 TRADER03_A

NEXUS 6.1

Neural Network!
No Lag! No Delay! No Repaint!



**2 MINUTES
SET UP**



**LIVE SIGNALS
24/7**

CONTACT US:

CYBERCODEACADEMY@GMAIL.COM

100%

PROFITABLE

NAXUS 6.1 INDICATOR INSTRUCTION MANUAL

Installing Meta Trader 4:

You can download Meta Trader 4, free of charge, directly from any MT4 Website. If you haven't done so already, here is the link.

[Download now](#)

After downloading the software, you must install it. Right-click on the icon of the downloaded file and select Extract here. If there is no such option, we need to download WinRAR. Then, open the created folder and run the program by double clicking on the file Terminal.exe.

Opening an account in MT4

To start using MT4, you need to first create an account. This is done after running the program for the first time.

- Run the program Meta Trader 4
- Click on File, in the upper left corner and then go to "Open an Account."
- The program will automatically redirect us to alpari.com
- This page is used for registration.
- We will receive user credentials by email (password and username)
- We will use them when starting MT4

If you have downloaded the software elsewhere, it's possible that the installation process might slightly differ - take it into account.

If you get stuck during installation, review the following instructions (and the comments, where people usually deal with similar issues)

[Part 2: Meta Trader 4 Show – How to install the MT4?](#)

Welcome to the second part of our show about the program Meta Trader 4. If you do not know what that is, I suggest you first read this article. MT4...

NAXUS 6.1 INDICATOR INSTRUCTION MANUAL

Installing the strategy in Meta Trader 4

Nexus 6.1 is downloaded as a .rar archive - you know that already, since you're reading this manual, which was a part of the archive. The archive also includes a folder with indicators and templates. However, how do you insert and use them in MT4? Read on.

- Extract the archive (right click, Extract here)
- For extracting the .rar archive file you must have to install the “WinRAR”
- The archive contains this manual + 2 folders - **templates** and **Indicators**
- In the program **Meta Trader 4**, click on the File, in the menu and then Open Data Folder
- A folder will open up, called something like this 50CA3DFB520CC1A8F28Bj44D1BF2A5702
- Open the folder Templates and copy the entire content of the downloaded folder – Templates inside of it.
- Go back and this time, Open the folder MQL4> Indicators, here, copy the entire contents of the downloaded folder - Indicators.
- Close MT4, wait a bit and run it again.
- Open a new chart, for example EUR/USD
- Click anywhere on an empty space in the chart Template; And select **Nexus 6.1**

NAXUS 6.1 INDICATOR INSTRUCTION MANUAL

How to use the (NEXUS 6.1 INDICATOR)

1 Minute Timeframe & 5 Minute Expiry

On the picture below, you will see how the strategy is supposed to look like, after it has been installed. Have a look at it, and I will explain everything further below



As you can see, the fundamental element of the strategy is the arrow. This type of arrow appears if all the analytical conditions are met. Here you can see two Arrow in this chart.

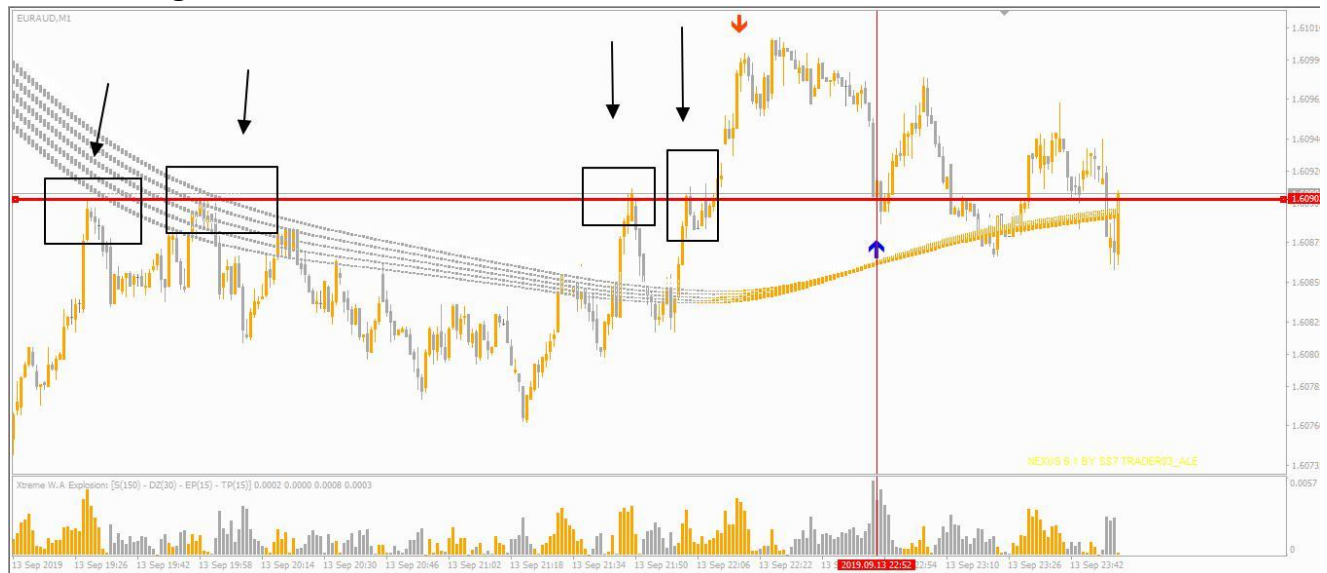
You just have to follow the arrow and have to place the trade on same candle for **“5 mins Expiry in same direction of the arrow”**.

NAXUS 6.1 INDICATOR INSTRUCTION MANUAL

How to increase indicator Accuracy

WOODIE CONDITON:

- You can increase your winning accuracy by using some technics those are really works with our indicator. When Signals comes you just have to look at the back of the market by zoom out.
- Once you Zoom out the market check if you find some points where market came more then 1 times and change its direction on that point. If you find this type of condition and your arrow signal come in this types of condition place the trade without hesitation.
- Like in Image below



- It's a Woodie Condition in other words if you imagine Boxes points and then Arrow where signal came. You will realize it look like W Not perfectly W But something look like with W that is woodies if you find type of condition place the trade.

NAXUS 6.1 INDICATOR INSTRUCTION MANUAL

SUPPORT AND RESISTANCE CONDITON:

- Support and resistance also similar to the woodie condition, In Support and resistance you find some point for Up & Down Trends where market comes again and again and change it's direction if you find this type of market condition and also found arrow then place trade for 5 mint expiry. Remember must use 1 mint chart.
- Like in Below Image



- These two signals are work with Support level as I told earlier, Support level mean same point at down side of the chart where market comes many times.

NAXUS 6.1 INDICATOR INSTRUCTION MANUAL

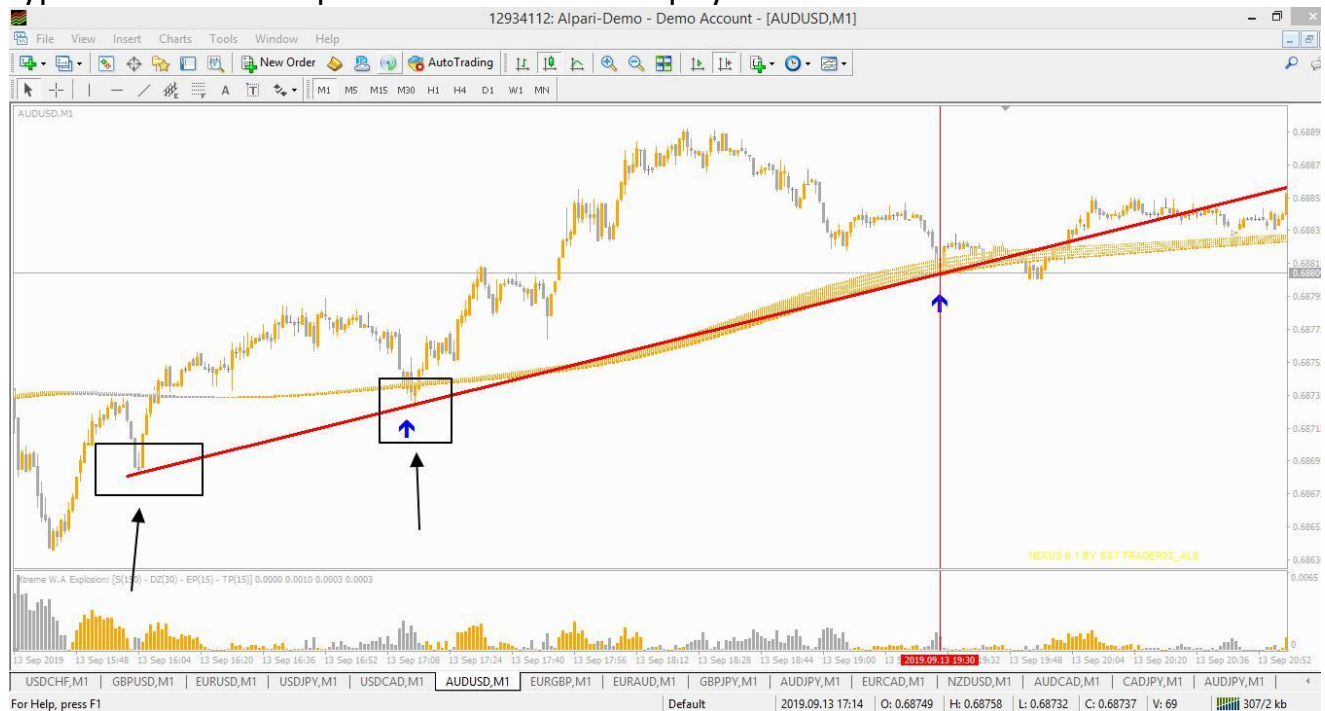
- You guys will also find this type of condition for Resistance level. Resistance level 100% opposite condition of the Support level.
- Like in below image



NAXUS 6.1 INDICATOR INSTRUCTION MANUAL

Trend Conditions:

- In image below this is a Up trend Condition You guys will also find same type of condition for Down Trend just look at them and if you found the signals on this type of conditions Open trade for 5 mins expiry in arrow Direction



Risk Management

In case if you loose the trade don't be panic just be patients cause it's happens we are in Trading and in Trading we win and sometimes also loose cause doesn't matter how much precaution we used When we have bad day we always loose and when you have good day we always Win.

In case if we loose the trades we use Risk management technics. Those are really good in trading and every professional trader should must have to use them

- Use 1,2 martingle Step in case if you loose your Trade.
- Use 1 to 10% amount of your total balance for trading.
- You have to set your mind like if you loose 3,4 trades in day then stop trading for that day.

NAXUS 6.1 INDICATOR INSTRUCTION MANUAL

MOST IMPORTANT

Please use only reliable brokers in your trading, such as:

[IQ Option](#)

[Binary](#)

Do not place the trades before or after 15 mins the news. Cause news can change the directions instantly and no indicator or Robot will work on news accurately. Cause of the abnormal behavior of the market. So that's why I really recommend you do not place trades on news timings.

You can check the news timings by visiting these sites:

[Alpari.com](#) [Economical](#) [calendar](#)

[RoboForex](#) [Economical](#) [calendar](#)

GOOD LUCK.